

THE
NATIONAL
GALLERY



CONFERENCES AND MEETINGS

☎ +44 20 7747 5931 · ✉ venue.hire@nationalgallery.org.uk · 📷 @ngevents

Conference and Meeting Spaces

Inspire creativity by hosting your conference in one of the greatest galleries in the world.



Pigott Theatre
Seated 300



Pigott Theatre Day Delegate Rate
Capacity 250



Whitcomb Room
Theatre 40 · Boardroom 28 · Cabaret 32



Supporters House
Seated 15



Whitcomb Room

Flooded with natural daylight, sleek wood walls and overlooking our Sainsbury Wing foyer, the Whitcomb Room is our purpose-built meeting room, offering an elevated space for your focused board meetings, away days and private dining.

Features

Located next door to our wonderful restaurant Locatelli, and only a short walk away from a masterpiece.

Theatre 40 · Boardroom 28 · Cabaret 32

Daytime hire (09:00–17:00) from £2,000 + VAT



Pigott Theatre

A tiered auditorium with a dedicated team of Audio-Visual Technicians provides an all-round solution to your conference, presentation and film screening needs. With built-in technology, a step-free stage and hybrid capabilities, we've got it all covered – whether your guests are joining in person or online.

Features

The adjacent foyer is an ideal space for refreshments, healthy lunches and post-conference receptions.

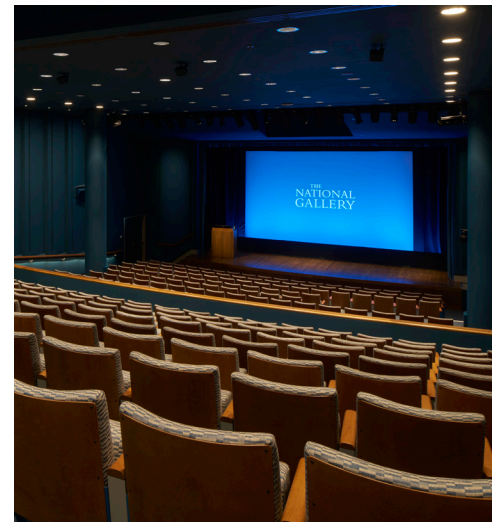
Seated 250 + 5 Wheelchair Spaces

Daytime hire (09:00–17:00) from £10,000 + VAT

Day rate packages available from £99.50 + VAT, per person (minimum numbers 200)

Pigott Theatre Technical Additions

With a wide range of equipment to enhance and increase event accessibility, our Pigott Theatre additions include: Gobo's, comfort monitors and live streaming/recording. Email the venue.hire@nationalgallery.org.uk for a full list of event enhancements.





Pigott Theatre Day Delegate Rate

A tiered auditorium with a dedicated team of Audio-Visual Technicians, an adjacent foyer for refreshments and catering provided by our in-house caterer Searcys. Our day delegate rate package is designed to provide a seamless and streamlined experience. Starting at £99.50 + VAT per person.

Features

09:00–17:00 hire

Breakfast, chef's choice light lunch and refreshment breaks

Private cloakroom

Event Manager

2x AV Technicians and equipment

Wi-Fi throughout

Seated / Standing 250 · 200 minimum numbers



Pigott Theatre Technical Additions

With a wide range of equipment to enhance and increase event accessibility, our Pigott Theatre additions include: Gobo's, comfort monitors and live streaming/recording. Email the venue.hire@nationalgallery.org.uk for a full list of event enhancements.

Supporters House

Tucked discreetly behind a private door on Trafalgar Square, Supporters House is an extraordinary new space created exclusively for our supporters and members. This elegant retreat is a rare gem, offering an atmosphere of quiet sophistication just next to our collection.

Features

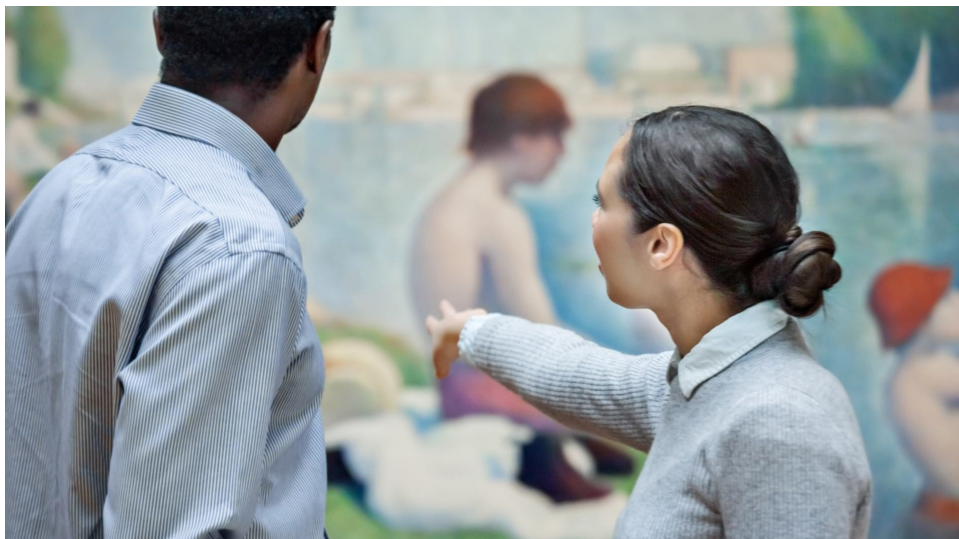
Tall ceilings, original architecture and a private entrance right on Trafalgar Square.

Standing 150 · Seated 15

Private Dining Lunch 12

Daytime hire (09:00–17:00) from £2,000 + VAT





Event Additions and Experiences

Hosting your event in the National Gallery is more than just a moment in a museum; it's a chance to inspire, enrich, connect and be creative. From £300 + VAT, you can create an experiences that bring your guests and paintings together.

Create a bespoke experience or choose from one of our specially curated packages:

Group Tours

A private guided tour of the collection during the day for up to 25.

Creativity

Guided drawing or collage making to boost brain activity!

Mindfulness

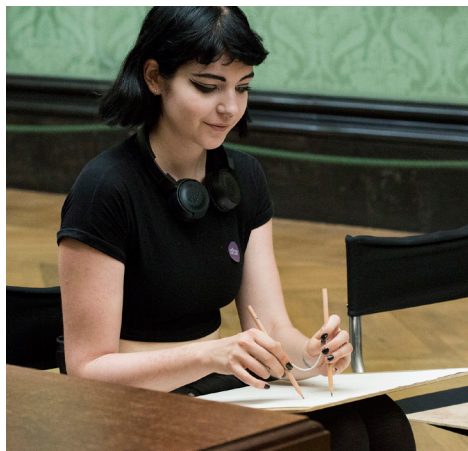
Explore the art of mindfulness with a guided meditation in one of our galleries.

Enrichment

A guided tour of our redisplayed collection with new stories and never-seen-before displays.

Connection

Connecting people and paintings through a discussion over a masterpiece of your choice.



Post-Conference Reception Spaces

Where events become experiences.



Supporters House

Standing 150 · Seated 15 · Private Dining 12



Wohl Room

Standing 300 · Seated 250



Pigott Theatre Foyer

Capacity 250



Locatelli

Standing 250 · Seated 100



THE NATIONAL GALLERY

Our dedicated Events Team are ready to answer any questions, book a showround and look forward to welcoming you to the National Gallery.

+44 20 7747 5931

venuehire@nationalgallery.org.uk

@ngevents

Corporate Membership

National Gallery Corporate Members enjoy a special association with the Gallery. The numerous benefits include complimentary and discounted hire of our spectacular event spaces, as well as exclusive access to our exhibitions and behind the scene tours. For more information, please contact the Corporate Development Team on 020 7747 5875 or email corporate.development@nationalgallery.org.uk

© The National Gallery, London. National Gallery Global Limited, London.

[nationalgallery.org.uk/venue-hire](https://www.nationalgallery.org.uk/venue-hire)