

TRAVEL TRADE AND GROUP VISITS



THE
NATIONAL
GALLERY



WELCOME

The National Gallery tells the story of European art, masterpiece by masterpiece. From its home in London's Trafalgar Square, the Gallery collects and cares for some of the world's greatest paintings – and shares them

with everyone to see. Founded in 1824, the collection has more than 2,600 paintings. Its story begins in medieval Europe and spans 700 years of art, with paintings from Renaissance Italy and by the French Impressionists.

GROUP VISITS

The National Gallery welcomes groups to explore over 700 years of wall-to-wall masterpieces. Discover the history and stories from our collection which is open all year round.

We have a dedicated Travel Trade and Groups team to assist in planning your itineraries and answering your enquiries. We provide a variety of options at preferential group rates to ensure that you get to experience the best the National Gallery has to offer.

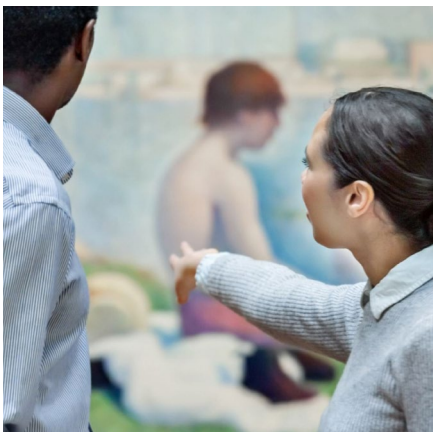
Guided tours and out-of-hours experiences can be booked in advance by emailing our Travel Trade Team, we do not accept walk ups.

We accept a minimum of 12 persons where a 15% discount for the group rate will be applied. Blue Badge Guides and coach drivers receive complimentary admission. Payments for group tours are to be paid via BACS a minimum of 14 days prior to the visit and are non-refundable.



Highlights Daytime Tour

Join us for an intimate expert-led tour of our world-renowned collection. We accept groups of all sizes; however, each tour can only accommodate a maximum of up to 25 guests each during our opening hours (10.00 – 18.00) with multiple groups touring the collection at any one time.



Out of Hours Tours

Experience the National Gallery after the doors have closed to the public. This exclusive expert-led event is an opportunity to take part in an engaging highlights tour of the National Gallery.



Bespoke Experiences

If you have a specific group request or certain requirements such as specialist or different language tours please get in touch. We would be happy to tailor make an experience for your group.

TRAVEL TRADE

If you are interested in bringing in groups on a regular basis and wish to join our account scheme, then please get in touch with the Travel Trade Team on TravelTrade@nationalgallery.org.uk to find out more.

Please note that you will need to guarantee a minimum spend to join the scheme and bring in groups on a regular basis. The benefits of joining the scheme include preferential rates and invoicing post visit.



EXPLORE OUR MOST POPULAR MASTERPIECES



Madame Moitessier
Jean-Auguste-Dominique Ingres
Room 45



The Fighting Temeraire
Joseph Mallord William Turner
Room 34



The Ambassadors
Hans Holbein the Younger
Room 12



The Toilet of Venus ('The Rokeby Venus')
Diego Velázquez
Room 30



Bathers at Asnières
Georges Seurat
Room 43



Bacchus and Ariadne
Titian
Room 10



Self Portrait at the Age of 34
Rembrandt
Room 22



Sunflowers
Vincent van Gogh
Room 43

FOOD AND DRINK

Muriel's Kitchen has a deli-style buffet, with a choice of beautifully presented seasonal salads, quiches and hot main meals alongside cream teas, cakes and patisseries prepared every day. It also serves hot and cold drinks including artisan barista coffee and alcohol.

Open daily: 11am – 5.45pm
Fridays: 11am – 8.45pm

The Espresso Bar by Muriel's has a selection of fresh, packaged meals and snacks, including sandwiches, salads, freshly pressed juices and artisan barista coffee.

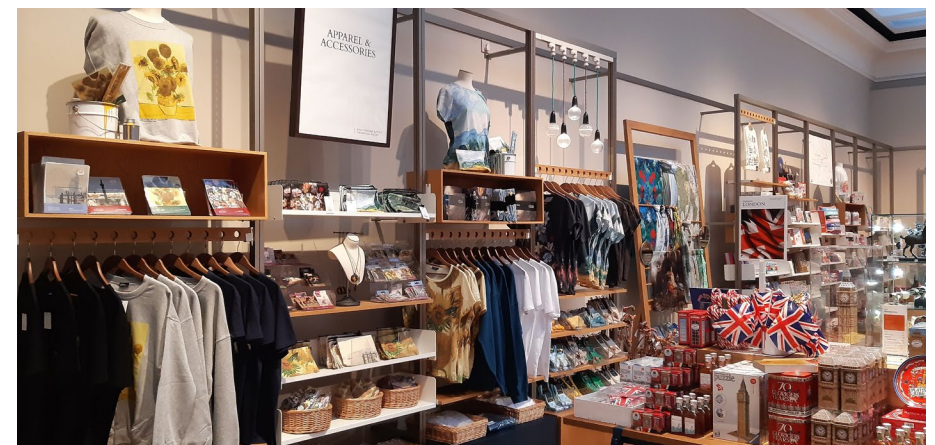
Open daily: 10am – 5.45pm

Please contact TravelTrade@nationalgallery.org.uk to discuss group catering requirements

SHOP

From prints and postcards to cushions and the Companion Guide, complete your Gallery experience with a visit to one of our gift shops, at the start and end of your visit.

Open daily: 11am – 5.45pm
Fridays: 11am – 8.45pm



BESPOKE EVENTS

Surround your guests with some of the world's greatest paintings by artists such as Leonardo, Monet and Van Gogh. Our central location, magnificent architecture and spectacular spaces never fail

to impress. Contact our friendly events team to discuss your event.

venuehire@nationalgallery.org.uk
+44 (0) 20 7747 5931



FAQS

Opening times

Our general visiting opening hours are 10.00 – 18.00. However, we also offer out of hours tours so please get in touch with the team to find out more.

Booking a group tour

It is essential to pre-book your guided tour in advance of arrival. Please email TravelTrade@nationalgallery.org.uk with your preferred date, time and group size.

Group rates

Yes, we offer a 15% discount for groups of 12+. Blue Badge Guides and coach drivers go free with a booked group.

Late arrivals

If you are running late please contact the team to advise. We will do our best to accommodate you where we can.

Photography

Photos are permitted inside the galleries without the use of flash. Please refrain from taking pictures of members of the public unless they have given their consent. Please be advised that photos are not permitted inside the exhibitions.

Access

If you have any special access requirements, please call us on +44 (0)20 7747 2885 and we'll be happy to help. Head to www.nationalgallery.org.uk/visiting/access for further details

Contact

For all enquiries, please email TravelTrade@nationalgallery.org.uk

