

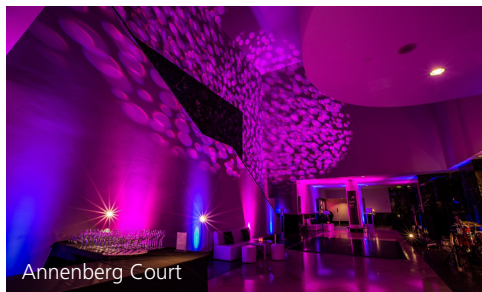
THE
NATIONAL
GALLERY



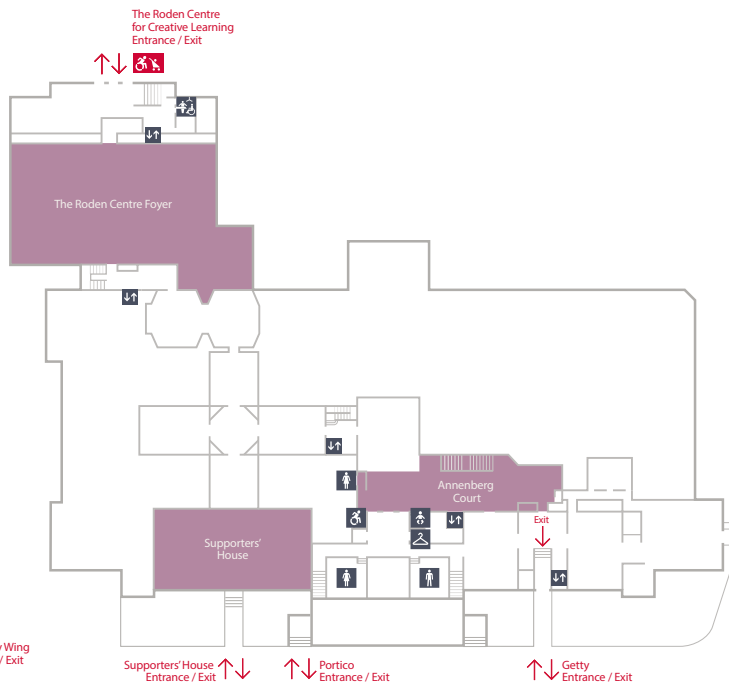
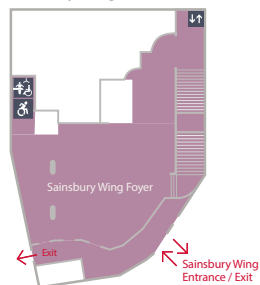
EVENING EVENT SPACES

☎ +44 20 7747 5931 · ✉ venue.hire@nationalgallery.org.uk · 📱 @ngevents

Level 0



Sainsbury Wing



Lift



Changing Facilities



Baby Changing



Accessible Toilet



Female Toilet



Male Toilet

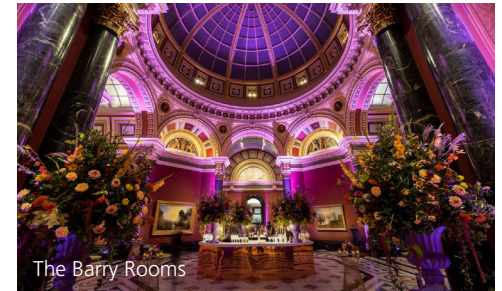


Cloakroom



Event Space(s)

Level 1-2



The Portico

Overlooking Trafalgar Square, our Portico Terrace sits in the heart of London. With a classic black-and-white tiled floor and views of Big Ben, Nelson's Column and the Trafalgar Square Lions, does it get more 'London' than this summer party space? In case of rain, a wet-weather option is also provided.

Features

The relief above the Portico Entrance was originally intended for John Nash's Marble Arch but was used for the Gallery instead.

Standing 100 · Seated 60

Morning hire (pre 10:00) from £7,000 + VAT

Evening hire (post 18:00) from £18,000 + VAT





Mosaic Terrace

A unique work of art is right at your feet on our Mosaic Terrace. Custom-made for the National Gallery by artist Boris Anrep, the ornate mosaic features personalities of 1930s Britain including Greta Garbo and Virginia Woolf. The spectacular domed glass ceiling brings in plenty of natural light, allowing the stars of the mosaic to sparkle.

Features

Talking points galore from a mosaic Christmas pudding to Winston Churchill.

Standing 60 · Seated 20

Morning hire (pre 10:00) from £7,000 + VAT
Evening hire (post 18:00) from £18,000 + VAT

Central Hall

As you leave the Mosaic Terrace behind, you'll step into the heart of the Gallery: Central Hall. With deep red walls and a glass ceiling, this space sits at the centre of the collection with Venetian and early Renaissance galleries to your left, and Impressionists and Baroque galleries to your right.

Features

Thomas Lawrence's famous portrait, *The Red Boy*, which was the first painting to be featured on a British postage stamp.

Standing 200 · Seated 100

Evening hire (post 18:00) from £18,000 + VAT



The Barry Rooms

Welcome to the most versatile space in the Gallery! The Barry Rooms have hosted everything from orchestral concerts to product launches and everything in between. Whether it's the main event or a drinks reception before moving into Room 32, this octagonal space easily transforms to suit your needs.

Features

The busts of celebrated artists like Michelangelo, Turner, Rembrandt and more on the domed ceiling!

Standing 300 · Seated 150

Evening hire (post 18:00) from £18,000 + VAT

Room 32

If you want to leave a lasting impression on your guests, this is the spot. Whether you're using round or long tables, everything about this space is nothing short of stunning, from the gold-gilded alcoves to the rich red walls. Imagine dining with the likes of Caravaggio and Artemisia Gentileschi – where else can you experience that?

Features

A Baroque Italian collection, including *The Supper at Emmaus* painted at the height of Caravaggio's fame and one of his most impressive religious pictures.

Standing 450 · Seated 300

Evening hire (post 18:00) from £18,000 + VAT

Room 34

Where 18th-century British charm meets some of the country's finest art. With soft blue walls setting the scene, it's the perfect backdrop for masterpieces by Turner, Constable and Stubbs. Whether you're planning a cosy gathering or a full-on celebration, this space adapts effortlessly to create whatever atmosphere you desire.

Features

At the heart of the room hangs the iconic *Whistlejacket* by George Stubbs. Free from human control, the riderless horse is the embodiment of unrestrained natural energy.

Standing 350 · Seated 270

Evening hire (post 18:00) from £18,000 + VAT



Annenberg Court

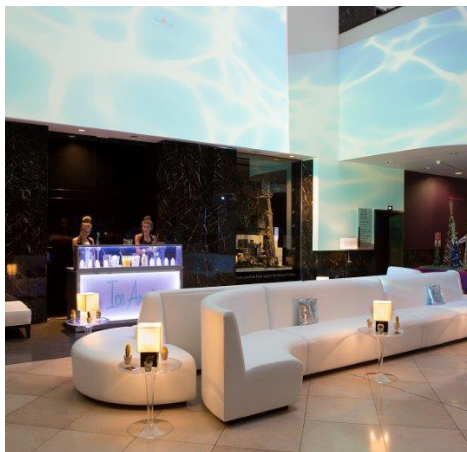
Dancing and a DJ in the Gallery? You heard right! Annenberg Court is where art and afterparties come together. Start your evening surrounded by our incredible collection in the main galleries, before heading down the dramatic marble steps into this sleek and contemporary space for a night your guests will never forget.

Features

Bridget Riley's monumental installation *Messengers* envelops the space, adding the art to your afterparty.

Standing 300 · Dancing 300

£2,000 + VAT per hour, in addition
to main gallery evening fee





The Yves Saint Laurent Room

The Yves Saint Laurent Room offers a truly intimate experience, with rich red fabric on the walls, you'll feel as though you're in a painting yourself. With direct entrance from The Roden Centre for Creative Learning, these spaces are a compelling combination of art and inspiration.

Features

The genius of Rubens, whose portrayals of religious and mystical stories provide a wealth of talking points. Oh, and Rembrandt's self-portrait is just next door, intimate encounters galore.

Standing 100 · Seated 60

Evening hire (post 18:00) from £10,000 + VAT



The Wohl Room

The Wohl Room links the past to the present. With easy access from our modern Grade-I listed Sainsbury Wing, you'll shortly arrive at the home of Venetian art, with masterpieces from Veronese, Titian and Tintoretto. The bold green damask tapestry and the light wood floor make this elegant room perfect for any occasion.

Features

Three reception spaces to choose from, after-party space nearby and our main exhibition space around the corner.

Standing 450 · Seated 300

Evening hire (post 18:00) from £18,000 + VAT





Supporters House

Supporter's House is a stunning new addition to our versatile event spaces. A lovely, homely contrast to our large picture galleries, it provides an intimate location for celebrating special occasions across this self-contained suite of rooms.

Features

Tall ceilings, original architecture and a private entrance right on Trafalgar Square.

Standing 100 · Boardroom / Dining 40

Daytime hire from £2,000 + VAT

Evening hire (post 18:00) from £10,000 + VAT



Sainsbury Wing Foyer

Open, welcoming, inclusive and accessible. The iconic Sainsbury Wing Foyer is the go-to blank canvas space within the Gallery, with a foyer space able to host 750 people and a 10m x 3m digital wall as the backdrop. This is the ideal space for product launches, branding and parties.

Features

A Grade-I listed building with top of the range technology, it's the perfect canvas for creation!

Standing 750

Evening hire (post 18:00) from £18,000 + VAT



© Owen Blacklife Photography



© Ben Fisher Photography



© Owen Blacklife Photography / James Everett



Locatelli

More than just the mezzanine! Locatelli is the newest reception space at the Gallery, light filled and bright with direct views of Trafalgar Square. This reception area provides the perfect mood for heading to the Galleries for dinner.

Features

Paula Rego's (1935–2022) 10-metre artwork *Crivelli's Garden* (1990–91), which was created especially for the Sainsbury's Wing's restaurant space by Paula Rego – the Gallery's first ever Associate Artist.

Standing 250 · Seated 100

Evening hire (post 18:00) from £18,000 + VAT

Event Additions and Experiences

Hosting your event in the National Gallery is more than just a moment in a museum; it's a chance to inspire, enrich, connect and be creative. For each event, we go above and beyond to help you create experiences that bring people and paintings together.

We have four key packages alongside bespoke tours of the collection to make your event become an experience to remember:

Creativity

Guided drawing or collage making to boost brain activity!

Mindfulness

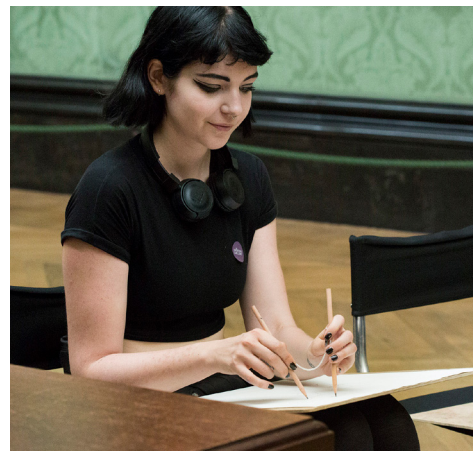
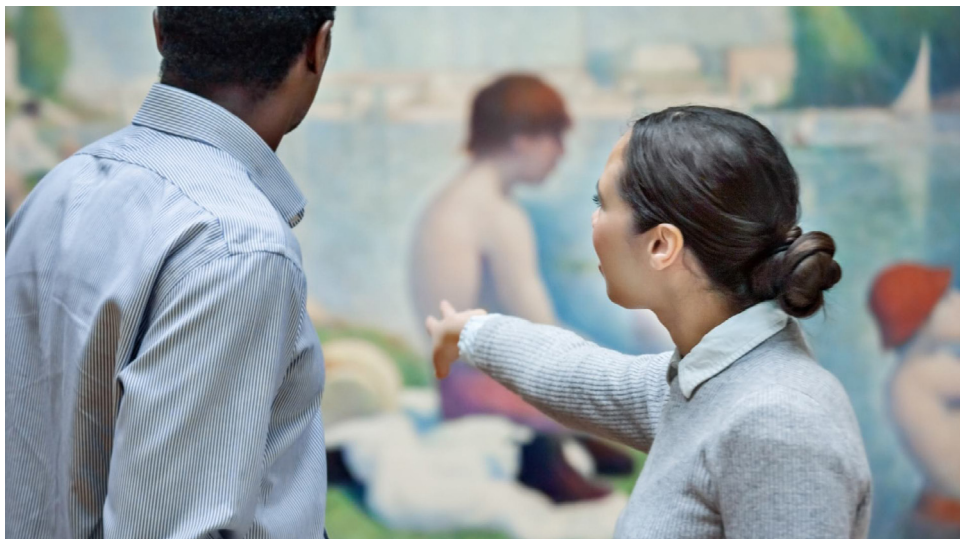
Explore the art of mindfulness with a guided meditation in one of our galleries.

Enrichment

A guided tour of our redisplayed collection with new stories and never-seen-before displays.

Connection

Connecting people and paintings through a discussion over a masterpiece of your choice.



Exhibitions and Corporate Membership

For the past 200 years, the National Gallery has been championing art for all, with an extensive track record of incredible exhibitions featuring works from the collection and loans of acclaimed masterpieces.

As a Corporate Member or Sponsor, you will gain access to private viewings of our internationally acclaimed temporary exhibitions, as well as exclusive benefits and special invites to Gallery-hosted events.

More information is available [here](#).



Accredited Suppliers

When the doors close at 6pm, it's time to transform the Gallery for your event. From sumptuous catering to immersive entertainment, choose from our wide selection of hand-picked expert suppliers to create a memorable event.

Explore our supplier options [here](#).





THE NATIONAL GALLERY

Our dedicated Events Team would love to welcome you to the National Gallery and show you our stunning spaces. Contact us to book a viewing!

📞 +44 20 7747 5931

✉ venue.hire@nationalgallery.org.uk

📷 @ngevents

© The National Gallery, London. National Gallery Global Limited, London.

nationalgallery.org.uk/venue-hire

